

Wellington Tramping & Mountaineering Club Inc.

Notice is hereby given that the sixty third annual general meeting of the Wellington Tramping and Mountaineering Club Inc. will be held in the Tararua Tramping Club Hall, 6 Moncrieff Street, Wellington on:

Wednesday 14th April 2010 at 8.00pm

1. Attendance and Apologies
2. Approval of Minutes of the 62nd AGM
3. Matters arising from the Minutes of the 62nd AGM
4. Consideration and adoption of the Annual Report and Annual Accounts
5. Election of Officers to the General Committee for the 2010 / 2011 term
6. Consideration and election of Life Members
7. General Business

- Note: (a) Associate, Junior, Family Members and Friends of the Club do not have voting privileges.
- (b) Please bring your copy of the Annual Report (which includes the Annual Reports) to the meeting.

Nominations

Nominations close on Wednesday 31st March 2010 and the final list will be posted on the Club notice board on Wednesday 7th April 2010.

Nominations received as at March 12th 2010:

President.....	Darren Hammond
Vice President.....	
Secretary.....	
Treasurer.....	Steve Austin
Chief Guide.....	
Assistant Chief Guide.....	Melissa Hewson
Newsletter Editor.....	Michael Lightbourne
Ruapehu Lodge Convenor.....	Sue Walsh
Social Convenor.....	Donna Maher
Transport Officer.....	Gareth Morton
Promotions Officer.....	
Membership Officer.....	Jenny Beaumont

BY ORDER OF THE COMMITTEE

Darren Hammond
President
March 12th, 2010

Minutes of the 62nd Annual General Meeting of the Wellington Tramping & Mountaineering Club Incorporated

Held in the Tararua Tramping Club Hall
Commencing at 8.05 PM on Wednesday April 8th, 2009

Chair: Sue Walsh (President)
Minutes: Darren Hammond (Vice President)

1. Attendance and Apologies

2008/2009 General Committee Members present:

Sue Walsh (President), Darren Hammond (Vice President), Steve Austin (Treasurer), Paul Jefferies (Chief Guide), Marie Smith (Social Convenor), Andrew Trembath (Transport Officer), Bronwyn Bell (Membership Officer), Clinton Hunter (Assistant Chief Guide), Michael Lightbourne (Newsletter Editor).

Apologies were received from:

Amanda Wells (Promotions Officer), Ian Bunckenburg (Ruapehu Lodge Maintenance Officer), Beth and Kevin Griffiths, Allen and Sue Higgins, Barrie Noyce, Peter Williamson + Kirsty Woods, Sally Colbeck, Peter Goodwin

(Approximately 40 members were present.)

2. Approval of the Minutes of the 61st AGM

Motion: That the minutes of the 61st Annual General Meeting of the Wellington Tramping and Mountaineering Club be accepted as a true and accurate record.

Moved: Marie Smith

Seconded: Ron Fayle

Outcome: Passed

3. Matters arising from the Minutes of the 61st AGM

There were no matters arising from the minutes of the 61st Annual General Meeting.

4. Consideration and adoption of the Annual Report and Annual Accounts

Sue referred members to the comment in the Chief Guides section of the report which stated that no statistics had been produced for the 07/08 year. These statistics had in fact been produced, but were not included due to a misunderstanding.

Steve noted interest income had fallen due to lower interest rates. He noted that the club had about 200,000 in the bank at present, around 40,000 would be spent on the 2nd van. Lodge did well last season, income was up, good snow season helped. Bus was sold during the year. Journal was cheaper this year, 5000 vs 12000. 2000 was spent on gear, vs nothing for previous year. Shares in KCE fell in value, Lodge valued at just under 1.2 million.

Wayne Stevens asked if trip fares were covering cost of transport. Steve replied that costs were being covered, and trip fares were going to be reviewed.

Motion: That the 2008/09 Annual Report and Annual Accounts as circulated be adopted.

Moved: Pete Gent

Seconded: Ron Fayle

Outcome: Passed

5. Election of Officers to the General Committee for the 2009/2010 term

Sue went through the nominations for the General Committee positions, noting the addition of Donna Maher + Sally Colbeck for Social Convenors following going to print. A nomination was received from Gareth Morton for Transport Officer, after the close off date, so he will be appointed by the incoming committee, Ian Bunckenburg's nomination was withdrawn after printing,

Darren Hammond	President
Marie Smith	Vice President
Simone Musin	Secretary
Steve Austin	Treasurer
Paul Jeffries	Chief Guide
Craig Bellhouse	Assistant Chief Guide
Michael Lightbourne	Editor
<i>No Nomination received</i>	Ruapehu Lodge Maintenance Officer
Donna Maher + Sally Colbeck	Social Convenors
<i>No Nomination received</i>	Transport Officer
Amanda Wells	Promotions Officer
Jenny Beaumont	Membership Officer

Motion: That the people nominated be duly elected to serve on the General Committee for the 2009/2010 term.

Moved: Andrew Trembath

Seconded: Bronwyn Bell

Outcome: Passed

6. Consideration of the Election of Life Members

There were no nominations this year to consider.

7. General Business

Van

At the AGM in April 2008 it was resolved to authorize the purchase of two vans to a maximum price of \$60,000 + GST.

In August the Committee located a 12-seater 2006 Transit van and purchased this for \$38,200 + GST. This left a balance of @21,800 + GST for the purchase of a second vehicle.

The first vehicle has proven to be perfectly suited to Club use. It is considered desirable that the second vehicle is of a similar mileage and age to the first.

The advantages of a late model /low mileage van are as follows:

- (a) A larger and yet more fuel efficient diesel engine, better suited to the type of loads we typically carry;
- (b) Lower maintenance costs and greater reliability throughout the term of ownership;

A significant resale value (7 years old vehicles are currently selling for around \$25k). By the time our van is seven years old it will likely have done around 180,000km and still have a strong resale value of say \$23,000.

By comparison an earlier model vehicle (approximately seven years old) will likely have higher servicing costs, especially as it nears the end of its expected five year ownership period, and limited resale demand (approximately 12 years old).

For these reasons, Committee seeks approval to spend an additional \$16,200 over the figured authorized at the 2008 AGM.

Roger Bolam then spoke to the motion.

Pete Gent asked whether \$40,000 was enough for another van, if that is what we paid last year. Roger answered that 38K + GST was more than enough based on the current market.

Sharron Came asked about insurance costs, Steve did not have the exact figures to hand, but was comfortable that this would not be an issue.

Dave Stapleton asked whether buying a new vehicle was an option, Roger replied that a new vehicle was available for \$55,000, but that a new vehicle would not hold its resale value as well as a recent used vehicle would.

Peter Scollay asked if both vans would be ready for replacement at the same time, and possibly may be hard to sell. Roger replied that resale was not a problem, as it was a popular vehicle

Motion: That members approve the purchase of a second 12-seater van to a maximum price of \$38,000 + GST

Moved: Andrew Trembath

Seconded: Roger Bolam

Outcome: Passed

8. Other General Business

Sue called for any other general business, questions or comments.

Sharron Came thanked the current committee for their work over the previous year

Marie Henderson thanked Sue in particular for her work as president, and her many years on committee

Sue gave a few final words

Meeting was closed at 8.30

**Annual Report of
The Wellington Tramping & Mountaineering Club Inc.**

For the year ended 31st January 2010

Sixty-Third Annual Report

President's Comments

The Committee is pleased to present to members the 2009/2010 annual report and accounts.

I would like to thank the committee for their hard work in the last year. For the first time in a few years, we started the year with a full committee after Sue Walsh agreed to be Ruapehu Lodge Convenor, and Gareth Morton was appointed as Transport Officer by the incoming committee. My job is made much easier by the excellent job each person does, and committee meetings have been effective and for the most part enjoyable ☺

Our club relies upon the efforts and sacrifices of volunteers, who give up their free time (and sometimes their work time!) so that we can run trips, and club nights, produce newsletters, and all the other things that we need to run a club of this size. I am enormously grateful to everyone who helps out the club in whatever capacity.

Now a few highlights of the last year. In 2008, the club sold our bus, and bought a Ford Transit van. Because of the success of the first van, we decided to buy a 2nd van in April 2009, and these 2 vehicles can be found travelling all over the lower North Island and upper South Island. The vans are a great advertisement for the club, and are a pleasure to drive. We now have 20 trained drivers, which is great as we are not reliant on just a few people as we were with the bus.

The Ruapehu Lodge sub committee have been very busy recently with renovations to one of the bunk wings in 2008, a refurbishment of the lounge in 2009, and a recent upgrade to the electrical switchboard. I know you will all appreciate the hard work put in by this dedicated team, to ensure that our lodge continues to be one of the best on the mountain.

In August 2009 the committee decided to buy Personal Locator Beacons for use on club trips. Most other tramping clubs in NZ are already using these, and to me, the argument for their use is simple - that they may help save a life. I know not all members agreed with this decision for a variety of reasons, but I am confident we made the right decision, and I hope to see these beacons being taken on as many trips as possible. Accidents can happen anywhere and at anytime, and if you think of the PLBs as a portable ambulance weighing just 235 grams, why wouldn't you take one?

I believe the club is in good heart, and it is great to see so many people out on trips at the moment. It is always very rewarding to me when other trampers see our vans and ask about our club, and I can tell them about us and encourage them to come to a club night. I hope you all feel the same about our great club.

Darren Hammond
President

General Committee Officers for 2009 / 2010

President	Darren Hammond
Ex-Officio	Sue Walsh
Vice President	Marie Smith (resigned August 2009)
Secretary	Simone Musin
Treasurer	Steve Austin
Chief Guide	Paul Jeffries
Assistant Chief Guide	Craig Bellhouse (resigned October 2009) Melissa Hewson (from October 2009)
Newsletter Editor	Michael Lightbourne
Social Convenors	Donna Maher Sally Colbeck
Promotions Officer	Amanda Wells
Ruapehu Lodge Convenor	Sue Walsh
Membership Secretary	Jenny Beaumont
Transport Officer	Gareth Morton
Journal Editor (Non AGM voted role)	Tony Gazley Jackie Foster
Gear Custodian (Non AGM voted role)	Marie Henderson (resigned February 2010)

Committee Reports

Chief Guide

Wow, what an amazing year it's been. It's been great to see so many new faces and the return of some regulars. The website continues to be a vital part of our club information in the future. I have really enjoyed the variety of Chief Guide tasks again this year and its many rewards. Our strong team of Club Officers has contributed to the co-ordination of many successful trips.

Highlights for the year have included:

- Over 80 people attending New Members night with many signing up for day trips and Bushcraft
- a brilliant Winter solstice at the Lodge
- 25 members participating in Instruction weekend mastering both Leadership and Bushcraft
- our Annual Photography competition
- new mattresses at Paua Hut
- Snowcraft training course
- new Personal Locator Beacons (PLB)
- Inspirational guest speakers at club nights

Our pool of Trip Leaders has done a tremendous job. Their continued support and initiative has broadened our trip base and encouraged new leaders to take up the exciting challenge.

Locations visited 2009/2010

The assets of New Zealand's National and Forest Parks continue to provide huge selection of wonderful places to explore and share with other punters.

Successful trips into the hills included:

North Island	South Island
Ruahine Forest Park Tararua Forest Park Kaweka Forest Park Egmont National Park Tongariro National Park Rimutaka Forest Park East Harbour Regional Park Belmont Regional Park Haurangi Forest Park Akatarawa Forest Park Whanganui National Park	Marlborough Sounds Nelson Lakes National Park Richmond Forest Park Abel Tasman National Park Kaikoura Ranges Kahurangi National Park Paparoa National Park

Training

Instruction

Following on from the two leadership courses held during 2008, we held a further leadership course in May 2009.

The first was a trip leadership weekend at Camp Wainui in Lower Hutt that gave potential trip leaders an introduction of how trip leaders organized trips with the club. Ten people participated in the course. The course covered a number of topics essential to trip leading, such as how to organize a trip with the club, and skills required out on the trail. This course was well received. All participants enjoyed the course and thought it was worthwhile. Three participants found that the course would improve their confidence in leading trips. It was felt by some that a more comprehensive coverage of some areas should be given, and more practice scenarios should be added to the course. As a result of this feedback, and a general feeling that there was a need in improving the club's skills base, a more in-depth series of training workshops for trip leaders took place over a weekend in November 2008. Topics that were covered included navigation both theoretical and practical, food on tramps, search and rescue and many scenarios.

Snowcraft

Both Snowcraft and AIC courses were run in 2009

The snowcraft course coordinator for the club, Sharron Came, produced a comprehensive report on the outcomes of these courses which is summarized here. In 2008 only the snowcraft course ran. In past years an alpine instruction component has run but this was cancelled due to lack of interest. Nineteen people participated, six of which were non-members. The courses were held at the club lodge on Ruapehu and ran in July. The courses were hampered by bad weather and it was not possible to teach the entire course syllabus as a result. Sharron noted that there was no practical component to avalanche awareness training. Following the snowcraft course, a number of recommendations were made by Sharron, the majority of which have been approved and will be implemented in 2009/2010.

Trip Statistics

Huts

Steve Austin took over from Grant Newton in representing the Club on the Tararua Aorangi Huts committee during the last year. Thanks to Grant for many years of work in this role

Of our huts:

Mountain House Shelter – the club continues to maintain the shelter and to clear the surrounding area of rubbish

Paua Hut – Mike Pratt and Phil Kendon continue with the great work on maintaining this wonderful asset. Recent changes include new mattresses in the hut

Smith Creek Shelter – the club continues to have tidy-ups around the hut.

Search and Rescue

2008-2009 was a quiet year again with few call-outs during the year. Club members have continued to participate in ongoing monthly training and the annual SAREX.

Special thanks

Special thanks to the President, Assistant Chief Guide, our dedicated Committees and sub-Committees and Vibram for your ongoing support, vitality and significant achievements this year.

Also thanks to everyone who put on their tramping boots and shared the journey.

Paul Jeffries
Chief Guide

Gear

This year things have been ticking along with the usual repairs and replacements. Thanks to everyone who helps out with these. Please do try to return any club gear you use in the state you'd like to receive it and if you can't, then let the person on the gear room know so they can see something is done. Stijn Schepers gets the 'best punter with gear' award for always returning his gear in better condition than it went out.

There has again been some turn over on people helping out with gear on Wednesday nights; for one thing we lost Gareth Morton who took up the role of club transport officer. What a fantastic way to lose someone - well done Gareth. And thanks to everyone who has taken a turn down in the gear room, it is just great to see people getting in with the hands on help.

Special thanks go to Steve Kohler for making up new billy, peg and pole bags. Steve has ample quiet initiative, perfect at getting a job done with the least fuss.

And a final reminder we are looking for a new gear custodian at the next AGM. I am not disappearing, just moving on to different outdoor activities. It is a great way to learn lots about the gear the club holds and an opportunity to bring in your fresh ideas.

Marie Henderson
Gear Custodian

Ruapehu Lodge

I am pleased to advise our new look lounge has a much sleeker look and the change in seating has proved to be very popular. The work carried out in the lounge has added to the great asset that the lodge is. If you haven't yet had a chance to have a look, I do recommend booking in, enjoying the updated lounge facilities and, of course, all that the mountain has to offer.

We've had a quiet year with work on the lodge in 2009. The lounge project was completed prior to the winter season and the changes to the seating have added versatility to the living area.

Approval had been received at a previous AGM to replace the Taranaki window. There has been extensive discussion on options for this work and it is expected a decision will be made this year for the work to be carried out during the 2010/2011 summer. Minor maintenance work has continued to ensure we have a fully functioning and comfortable lodge.

The sub-committee has taken careful stock of other work to be completed along with approximate costings and have put into place a five year plan for this work to be done. There has been extensive discussion around the funding of this work. Our fixed costs are substantial and we need to ensure the income from the lodge covers these costs as well as providing a monetary base for the future work. We also need to ensure we fully promote the lodge to you and to non members.

We need to build up a bigger base of members who are interested and willing to put time into the maintenance of the lodge. I invite you to assist in working parties and learning how the lodge operates. All you need to do is contact me.

And finally, I would very much like to thank the members of the sub-committee for their enthusiasm, experience and knowledge, and their willingness to give up their free time to work on the lodge – thank you.

Sue Walsh
Ruapehu Lodge Convenor

WTMC LODGE BUNK UTILISATION				
	Autumn '09		Winter '09	
	Member	Non-Member	Member	Non-Member
Adult	12	41	698	503
Life	0		7	
College	0	20	152	186
Intermediate	0	29	75	175

Primary	0	1	81	55
Baby	0	0	11	20

Membership

We've had another good year in 2009 and we have a healthy 494 members. Unlike many other tramping clubs we have a vibrant, active tramping community which is fantastic – lets keep it this way!

Our membership consists of: 163 senior members, 47 couples (94 individuals), 48 veterans, 25 veteran couples (50 individuals), 69 family members, 20 life members, 20 associate members and 30 friends of the club.

Below is a summary of membership numbers over the last nine years:

Member info	2009 /10	2008 /09	2007 /08	2006 /07	2005 /06	2004 /05	2003 /04	2002 /03	2001 /02
Members start of year	478	453	442	429	428	435	423	396	368
Plus new members	38	37	30	41	34	34	46	55	52
Less resignations, deletions	-22	-12	-19	-28	-33	-41	-34	-28	-24
Members at year end	494	478	453	442	429	428	435	423	396

We have been able to keep subscriptions low this year and have reduced subscriptions further for those wishing not to receive the WTMC monthly newsletter though the post. The membership form and invoice form for renewals have been updated to encourage electronic subscription payments and to reflect the new electronic version of the WTMC newsletter.

Work is still underway to develop an on-line database system that would combine the Access database and the web-based contact details page to make it easier to keep details up-to-date.

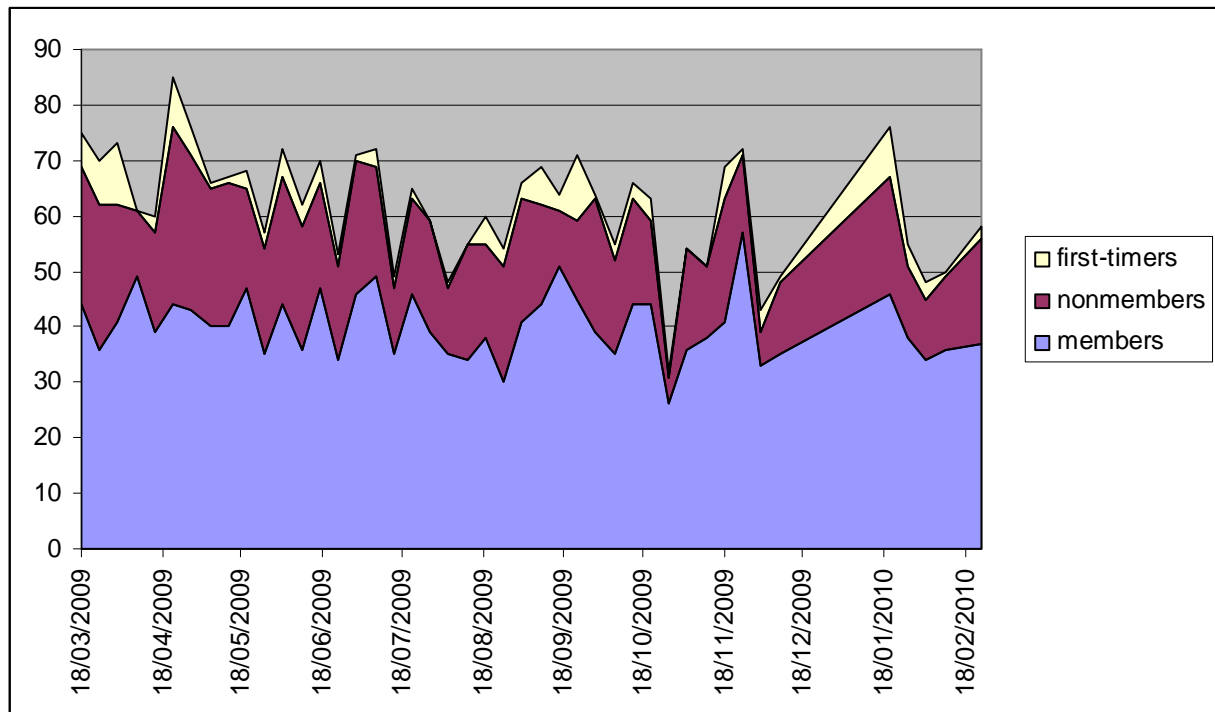
Members are encouraged to keep the club up to date with any changes to contact details either through the club website or by emailing membership@wtmc.org.nz.

Jenny Beaumont
Membership Officer

Promotions

Over the past year, about 20 club members regularly helped out on the door on Wednesday nights, greeting people and answering newcomers' questions. Average weekly attendance remained strong at 62; compared to 63 for 08/09, 51 in 07/08 and 50 in 06/07. More members are attending on Wednesday nights than has been the case in recent years – an average of 40 each week.

On average, there were three first-timers each week (with at least one virtually every week). This is at the same level as recent years and continues to demonstrate the health (and appeal) of the club. Number of first-timers were particularly strong in January, as the graph below illustrates (weeks when club-nights were not held are not shown on the graph).



The annual info evening (also know as new members' night) was held on 17 February and attracted at least 60 people new to the club, which is about the same as recent years. More than 30 club members signed up in advance to help out on what was a fun

night, complete with entertaining slideshow and homemade cakes. The evening was promoted through posters and flyers in tramping shops and cafes, the DominionPost and community newspapers, and event-listing websites. The newcomers were very keen to sign up for trips, with those at the easier end of the grading system quickly filling up in February and March.

An 18-month calendar was produced in 2009, featuring award-winning photos from the past two years' photo competitions. We printed and sold 125 high-quality calendars, at a cost of \$20 each, achieving the desired break-even result.

Amanda Wells
Promotions officer

Social Convenor

We have once again maintained good attendance on club nights. This year the usual dip in the middle of the year did not seem to happen with some of our highest numbers occurring in June and July along with our usual high numbers in November for the Photo Competition. This year we had Athol McCredie kindly give up his time to Judge and present the Photo Competition. It's always good to get a different perspective.

The presentations this year have been of a very high standard and a large majority have been in New Zealand with a few taking us many places overseas. This year has seen an increase of activities other than tramping with cycling being a popular talking point. However it has still been mostly tramping we hear about in general which is what we are about. We have also had some very informative talks this year about a variety of things

Those presentations not focused on trips have included: The Black Robin, getting back to Nature, our quiz night, all about Federated Mountain Clubs, Information about Mountain radio's, Sean Barnett giving us an idea about photography and Land Information New Zealand talking to us about the new mapping system. Our personal favourite was learning that robin's can count!

Club members have been great about coming forward and sharing their stories and photos and I'm very grateful to all of them. Darren has stepped in at the front I've not been available so I thank him for that. Special thanks has got to go to Sharron Came who has this year given a few talks and each time has managed to bring in record numbers. And to all those who help out in the kitchen and set out chairs – thank you very much.

We have very much enjoyed the role of Social Convenor and while it is great to share to work load between two of us it is a large commitment to be there every Wednesday night. Due to this next year Sally is unable to continue in the position but Donna is keen to stay. Sally is happy to help when needed though.

Donna Maher and Sally Colbeck
Social Convenors

Transport

2009/10 has been the first full financial year that the club has owned and operated both of its 2 new Ford Transit 12-seater minivans, which have been a splendid asset of which the club is proud to own. Owning the vans has seen a tremendous drop in the amount of money spent on renting vehicles each week.

The club has a list of 50 members who have volunteered to drive the vans on weekend trips, though we are always on the lookout for more. To this effect over the previous year the club organised 2 Driver Training Sessions led by Steve Austin who has a P Endorsement in his Drivers Licence. These sessions were run with the aim of showing people the features and functions of the 2 vans, whilst giving them a chance to practise driving the vans without the rush of a Friday evening departure. Twenty of our 50 drivers have attended one of these sessions and there are plans to continue with more.

The club name, logo and website are displayed on both vans which is a great source of free, mobile publicity. The club committee considered buying the registration plate WTMC2, but at a cost of \$800 this was deemed as too much.

I have been pleasantly surprised so far that the interior of the vans (particularly the upholstery) have been kept relatively clean from mud, food and drink spillages. Some of this praise must go to Hans & Mika who have volunteered to clean the vans on a monthly basis.

There has only been minor damage caused to the vans in the form of a couple of very small dents, a smashed rear brakelight and a broken exterior door handle. Each van contains snow chains, a bike rack, First Aid Kit, North & South Island road maps and also disinfectant for SI trips to help stop the spread of didymo to the NI.

RemarkIT Solutions continue to store our vans for \$50 per week, located on Aotea Quay behind Westpac Stadium. This arrangement has gone fairly smoothly this past year for both parties and will hopefully continue as the storage location is relatively close to the train station for Friday night departures.

Each van is averaging 9-10 punters per weekend, with SI trips normally requiring the addition of a rental vehicle or shuttle bus services.

I have also personally taken over from Ailsa Chisholm the booking of Interislander and Bluebridge ferries, as well as booking Nelson Lakes Shuttles and water taxis when required. We continue to receive discounted Group rates with both ferry companies.

Gareth Morton
Transport Officer